

## ANTI-DECUBITUS HEEL PADS



### Description

Semi-cylindrical, rectangular and cylindrical heel pads.

### Effects and advantages

It favours the patient's posture and prevents possible discomfort. Offers greater comfort and provides correct heel support in any posture. Removable covers for easy cleaning.

### Composition

Suapel: 60% polyester and 40% acrylic.  
Polyurethane.  
Foam core.  
Velcro fastening.

### Dimensions

- Semi-cylindrical and rectangular: 23x19x9cm.
- Cylindrical:  
Inner diameter: 10cm.  
Outer diameter: 21cm.  
Depth: 12cm.

### Maintenance

Removable covers.  
Hand wash in cold water with non-abrasive products. If machine washed, use a delicate cycle.  
Dry flat.  
Do not iron.  
Do not bleach.  
Do not dry clean.



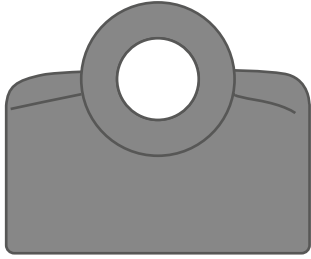
### Warranty

The warranty period is 2 years. It starts from the date of purchase from the dealer. The warranty does not cover normal wear and tear of the product and does not replace statutory warranties. Please contact the company's quality department in the event of an incident in order to resolve it.

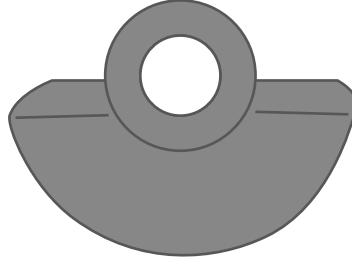
# Anti-decubitus

## Anti-decubitus heel pads

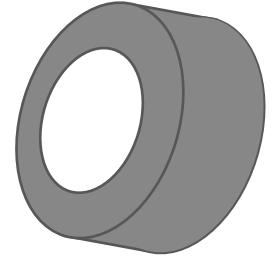
### Models



Rectangular



Semi-cylindrical



Cylindrical

### Colours



Navy blue



Grey



White



Graphite

MODEL	VERSIÓN	COLOUR	REF.
Anti-decubitus heel pads	Semi-cylindrical	White	109100
		Navy blue	109102
		Grey	109104
	Semi-cylindrical waterproof	White	109121
	Rectangular	White	109122
		Navy blue	109124
		Grey	109126
	Rectangular waterproof	White	109103
	Cylindrical	White	109110
		Graphite	109112



antiol or



anti bacterias



anti hongos



anti ácaros



anti CHINCHES



SUAVE



TRANSPIRABLE



LAVABLE